

# SPECIALTY CONCRETE CONSTRUCTION

## GRACE CHRISTIAN SCHOOL



### PROJECT CREDITS

#### OWNER

The Canadian Reformed Society of Flamborough

#### ARCHITECT OF RECORD

OCA Architects

#### ENGINEER OF RECORD

Strudet Inc.

#### TILT-UP ENGINEER

Barry Bryan Associates

#### GENERAL CONTRACTOR

The Canadian Reformed Society of Flamborough

#### TILT-UP CONTRACTOR

Tilt Wall Ontario Inc.

#### MATERIAL SUPPLIERS

Hanson Ready Mix

#### ADDITIONAL PARTICIPANTS

- Carpenters Union Local 18
- Sika Canada Inc.

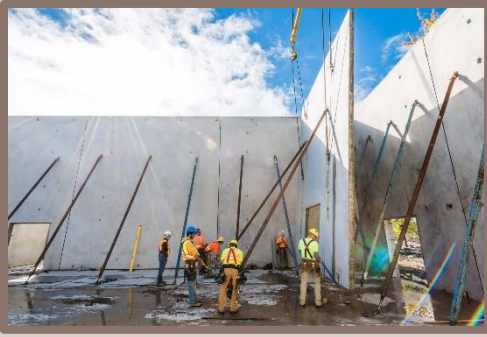
### PROJECT FACTS

**LOCATION** Dundas, Ontario

#### QUICK PROJECT FACTS

- BUILDING USE: Elementary Use
- SQUARE FOOTAGE OF PANELS: 38,059 sq ft
- NUMBER OF PANELS: 116
- HEAVIEST PANEL: 77.6 Kips (77,600 LBS)
- TALLEST PANEL: 27' 9"
- LARGEST PANEL: 864 sq ft





Tilt-up was chosen for this project because as a private school funded by donations every dollar counts! Long term savings was also a factor as tilt-up will save approximately 30% per year on energy consumption. Working with a volunteer construction management on this project did pose challenges, but the simplicity of the tilt-up method overcame these quite easily.



**FRONT VIEW**  
A combination of brick and concrete usher this project from the old into the new.

**INTERIOR – SCHOOL LIBRARY**  
Concrete painted white in the library is a space for bright minds to study.



**LIFTING PANELS**  
The fully insulated panels provide and energy efficient envelope.

PROJECT LINK: <https://Tiltwall.ca/project/grace-christian-school-dundas-ontario-2017/>

